



# WINTER PRODUCTS LINE CARD: CENTRAL NEW YORK

**We proudly carry American Rock Salt  
– mined in Upstate New York.**



**100% SATISFACTION GUARANTEE**

Whether you need a quick quote, request emergency service or expert advice, we guarantee your satisfaction.



**IMMEDIATE RESPONSE GUARANTEE**

Our Ice Control experts will respond to you quickly throughout the winter season.

**Contact Us:**

ROCHESTER: 585-292-9870 | DANSVILLE: 585-335-5970 | SYRACUSE: 315-505-0565  
| AUBURN: 315-515-3600 | ITHACA: 607-347-4455



# ROCK SALT & ICE CONTROL HQ - ONE STOP SHOP FOR WINTER

Milton Rents is your one-stop shop for ALL of your winter needs including:

- Bulk Rock Salt: we maintain one of New York state's largest inventories of bulk rock salt & road salt.
- Bagged Rock Salt & Deicers: we are one of the largest packaged rock salt & ice melt distributors in NY.
- Heaters: rental heaters available in a range of sizes for both indoor & outdoor use.
- Snow Removal Equipment: we rent only the best brand name equipment including Cat & Toro
- Winter Clothing & Snow Removal Tools: we carry a vast selection of professional clothing & snow tools



## Contact Us:

ROCHESTER: 585-292-9870 | DANVILLE: 585-335-5970 | SYRACUSE: 315-505-0565  
 | AUBURN: 315-515-3600 | ITHACA: 607-347-4455

# SALT SAFETY RULES & PROCEDURES

**Milton Rents**



## Milton Rents, Inc.

### Salt Facility Safety Rules & Policies

- Remain in your vehicle at all times unless you are in the designated tarping area.
- Tarping and cleaning only should be done in the designated tarping area.
- Do not climb on trucks; use designated tarping and the cleaning station.
- Stay within designated traffic lanes.
- Speed Limit: 5 mph
- Do not enter the loading area until the truck ahead of you has cleared the loading area.
- One truck on the scale at a time.
- Do not move beyond the inbound & outbound scale until you see the green light.
- Do not leave your vehicle unattended.
- Loads shall not exceed the vehicle's GVW or maximum weight allowed by an overweight permit.
- Trucks without a valid registration and overweight permit (when applicable) will not be loaded.
- Dump trailers and tailgate spreaders will not be loaded.
- No Trespassing – No Illegal Dumping
- No cash will be accepted at the scale house. Cash payments must be made at Milton Rents main office during normal business hours. *(Mon-Fri 7am-5pm, Sat 8am – Noon)*
- **Please contact your sales representative or the scale house to give notification in advance for any order that will be picked up by a 3<sup>rd</sup>-party trucking company on your behalf.**

**ALL DRIVERS ARE TO ADHERE TO THE RULES & POLICIES LISTED ABOVE. ANY DRIVERS IN VIOLATION WILL NOT BE LOADED AND MAY FACE SUSPENSION OF SERVICES.**

**ALL DRIVERS ARE REQUIRED TO ADHERE TO ALL D.O.T. REGULATIONS AND ALL OTHER APPLICABLE VEHICLE AND TRAFFIC LAWS.**

### Salt Facility Seasonal Hours of Operation

Monday – Friday 4:00am – 5:00pm, Saturday & Sunday 5:00am – 10:00am

*Hours subject to change during holidays and warm-weather patterns*

Text “**dukesalt**” to 877-618-6757 to register for updates on extended hours during a weather event.

## **Contact Us:**

ROCHESTER: 585-292-9870 | DANVILLE: 585-335-5970 | SYRACUSE: 315-505-0565  
| AUBURN: 315-515-3600 | ITHACA: 607-347-4455

# BAGGED SALT & DEICERS

Milton Rents



## Good



### AMERICAN ROCK SALT

Proudly carrying American Rock Salt in 50 pound bags and bulk. A USA company located in Upstate New York. Widely respected for its ice melting products for municipal and commercial customers.

## Better



### STEALTH BLUE

Premium ice melter, enhanced with CMA & Calcium Chloride. Exceptional, fast acting formula is super effective at lower temperatures. Color coated blue for visual coverage.

## Best



### ENVIRONMELT ICE MELT

Widely respected as THE Green Solution. Advanced formulated with CMA (Calcium Magnesium Acetate) for exceptional melting. Not as harmful to vegetation. Available in 50 pound bags.

We serve municipal, wholesale, commercial and residential customers.

Contact: David Szydowski

Email:

David\_Szydowski@miltonrents.com

Mobile: 585-703-1936



### MR. MAGIC

Fast acting, long lasting ice melt requires less than competing ice melts for same desired effect. Easier on the environment, concrete, brick, wood & pets.



### VAPORIZER CALCIUM CHLORIDE

Pellets effective to -25 degrees Fahrenheit. The most powerful Ice Melt product on the market, works instantly and is long lasting. This 90% calcium chloride pellet is available in 50 pound bags.



### WALK BEHIND SPREADERS

• We carry a full-line of walk behind salt spreaders by Chapin - renown for manufacturing long-lasting, professional grade spreaders.



### PRO GRADE POLAR VORTEX

Pro grade ice melt with visible color indicator. Contains Calcium, Magnesium, Potassium, Sodium & CMA blend.



### VAPORIZER CALCIUM FLAKE

Calcium Flake effective to negative 30 degrees Fahrenheit. Calcium Flake attracts moisture making it perfect for dust control. Available in 50 pound bags.

## Contact Us:

ROCHESTER: 585-292-9870 | DANVILLE: 585-335-5970 | SYRACUSE: 315-505-0565

| AUBURN: 315-515-3600 | ITHACA: 607-347-4455

# PORTABLE HEATERS

**Milton Rents**



Keep your crew up & running through the winter season! A range of heaters are available for rent by the day, week or month. Our team would be glad to assist you in calculating the BTU's required for your job site. For a price quote, the best-maintained rental heaters, outstanding service & fast delivery, give us a call.



## CONCRETE CURING & THAWING

- Wacker Neuson
- Diesel
- 150,000 - 620,000 BTU



## FORCED AIR HEATERS

- LB White
- Kerosene
- Up to 750,000 BTU



## INFRARED HEATERS

- Val6 118K BTU
- Electric / Kerosene



## INDIRECT HEATERS

- Flagro & Frost Fighter
- Propane, Natural Gas, Kerosene
- 200,000 - 500,000 BTU



## JOBSITE HEATERS - FORCED & INDIRECT

- Frost Fighter
- Propane, Natural Gas, Oil & Diesel
- 500,000 - 700,00 BTU



## PORTABLE ELECTRIC HEATERS

- Patron- LB WHITE



FVO-1100TR

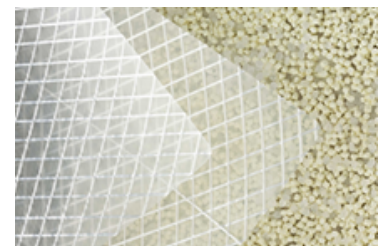
## SELF-CONTAINED INDIRECT HEATER

- Frost Fighter
- Propane, Natural Gas, Oil & Diesel
- 390,000 - 780,00 BTU



## CONCRETE CURING BLANKETS

- Proven in maintaining heat of hydration, particularly during the critical early stages of concrete curing.
- Low 0.87 Perm rating, providing superior vapor block during curing
- Available in a range of sizes



## REINFORCED POLY

- Dura-Skrim R-Series is a heavy-duty scrim reinforcement that dramatically enhances the film's tear resistance. With its UV inhibitors, the film can maintain its integrity for up to a year when used outdoors, making it a reliable temporary solution for long-term outdoor use.

\* SELECTION AND AVAILABILITY MY VARY BY LOCATION **Contact Us:**

ROCHESTER: 585-292-9870 | DANSVILLE: 585-335-5970 | SYRACUSE: 315-505-0565  
| AUBURN: 315-515-3600 | ITHACA: 607-347-4455

# WHICH HEATER IS BEST FOR YOU?

Milton Rents



## HOW TO CALCULATE BTUS & HEATER RENTAL NEEDS

FrostFighter, a leading manufacturer of heaters, provides an excellent resource and guide on their website to calculate

BTUs and heater rental needs. Visit <http://frost-fighter.com/calculator/> to access the FrostFighter BTU Calculator and Fuel Consumption Rates.

**Step 1:** Calculate the Volume of Space to be heated

- Rectangular Cubic Feet: multiply Length by Width by Height to calculate cubic feet.
- Dome - Cubic Feet: calculating the cubic feet of a Dome can be quite completed. Visit <http://frostfighter.com/calculator/> to use Frost Fighter's calculator.

**Step 2:** Describe your enclosure

- Very Loose: tight roof and nearly completed walls; door, window and other openings covered with plastic or canvas - heavy partitioning.
- Loose: tight roof and nearly completed walls; door, window and other openings covered with plastic or canvas - heavy partitioning.
- Fairly Loose: tight roof and nearly completed walls; door, window and other openings covered with plastic or canvas - medium partitioning.
- Fairly Tight: tight roof and completed walls without insulation, window and door openings enclosed with canvas or plastic - medium to heavy partitioning.
- Tight: windows, doors, and elevators installed, walls exist (not dry-walled) - medium partitioning.
- Very Tight: windows, doors, and elevators installed, walls exist (not drywalled) - no partitioning.

**Step 3:** Choose Desired Temperature-

- 20°F t 60°F

**Step 4:** Choose a Heater Unit

- Choose from a range of outstanding

## BTU CALCULATOR

STEP 1 CHOOSE AND ENTER SHAPE DIMENSIONS OR ENTER A VOLUME: THE NUMBER(S) BELOW CAN'T BE 0

Select Shape



Rectangular



Dome

Set Room Dimensions

Length:

ft.

Width:

ft.

Height:

ft.

Volume

or I know the volume:

0 cu ft

STEP 2 CHOOSE THE OPTION THAT BEST DESCRIBES YOUR ENCLOSURE:

Very Loose

Tight roof and nearly completed walls - open to most of light/air partitioning.

Loose

Tight roof and nearly completed walls; door, window and other openings covered with plastic or canvas - heavy partitioning.

Fairly Loose

Tight roof and nearly completed walls; door, window and other openings covered with plastic or canvas - medium partitioning.

Fairly tight

Tight roof and completed walls without insulation, window and door openings enclosed with canvas or plastic - medium to heavy partitioning.

Tight

Windows, doors, and elevators installed, walls exist (not dry-walled) - medium partitioning.

Very Tight

Windows, doors, and elevators installed, walls exist (not dry-walled) - no partitioning.

STEP 3 CHOOSE DESIRED TEMPERATURE RISE:

60°F

50°F

40°F

30°F

20°F

STEP 4 CHOOSE A HEATING UNIT:

IDF 200 Oil/Diesel (220,000 BTU)

## RESULT

Sorry, the volume cannot be 0. Please recheck your shape dimensions or volume.

## Contact Us:

ROCHESTER: 585-292-9870 | DANVILLE: 585-335-5970 | SYRACUSE: 315-505-0565  
| AUBURN: 315-515-3600 | ITHACA: 607-347-4455

# WINTER PPE & SNOW REMOVAL

Milton Rents



## SAFETY JACKETS, PANTS & BIBS

- Highest rated line of ANSI-2010 Class 3 Bomber Jackets, 2-in-1 Jackets, 8-in-1 Jackets & Parkas. Lined & taped seams.

## HARDHAT LINERS & FACE PROTECTION

- High quality hardhat liners & face protection keeps your crew insulated from the elements



## INSULATED SAFETY GLOVES

- Exceptional high visibility gloves designed for demanding environments and operator comfort.



## FLEECE & SWEATSHIRTS

- Hooded sweatshirts & fleece available with zippers or as pull overs. Meets ANSI / ISEA 10702010 Class 3 standards.

## WATERPROOF JACKET & BIBS

- High visibility gear made from 100% polyester, PU coated oxford fabric. Fully taped seams for waterproof integrity.

## Contact Us:

ROCHESTER: 585-292-9870 | DANVILLE: 585-335-5970 | SYRACUSE: 315-505-0565  
| AUBURN: 315-515-3600 | ITHACA: 607-347-4455

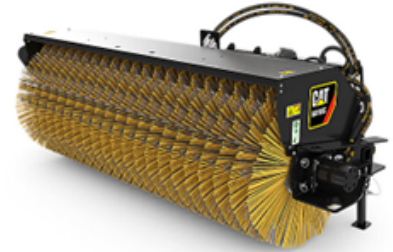
# SNOW REMOVAL

**Milton Rents**



## SKID STEERS

- Powerful CAT SKIDSTEERS to get you thru winter.
- Full range of CAT attachments including snow sweeper attachments.



## SNOW PUSHERS

- Durable Ames TrueTemper snow pushers available in durable Poly. 18"-36" sizes available.



## PLASTIC SNOW FENCE

- Available in Orange & Black, our durable snow fence, posts & stake will keep your job site protected.

\* SELECTION AND AVAILABILITY MY VARY BY LOCATION



## Contact Us:

ROCHESTER: 585-292-9870 | DANVILLE: 585-335-5970 | SYRACUSE: 315-505-0565  
| AUBURN: 315-515-3600 | ITHACA: 607-347-4455



# COMPACTION & REPAIR

**Milton Rents**



## Compaction Equipment

Milton Rents carries a comprehensive fleet of the best brands of well-maintained rental equipment including ride-on compaction equipment (double-drum, single-drum & tandem drum) and walk-behind compaction equipment (forward plate rentals, rammers & stompers, reversible plate compactors and walk-behind rollers).



## BLACK TOP REPAIR

Helpful Pothole Patching Information:

- Easy to form and compact for quick application in patching blacktop and asphalt. Leading Cold Patch solution, that prep without any heating or mixing.



### PERMA-PATCH<sup>®</sup>

PERMANENT PAVEMENT REPAIR

<p><b>PROVEN MOST DURABLE</b></p> <p>Per Federal Strategic Highway Research Project "SHRP" Test.</p>	<p><b>HIGH WORKABILITY</b></p> <p>Open. Pour. Done. Easy to use with no mixing or preparation.</p>	<p><b>EXTREME VERSATILITY</b></p> <p>Handles your toughest applications.</p>	<p><b>2 YEAR SHELF LIFE</b></p> <p>Always ready. Keep on hand with no waste.</p>
--	--	--	--

\* SELECTION AND AVAILABILITY MY VARY BY LOCATION

## Contact Us:

ROCHESTER: 585-292-9870 | DANVILLE: 585-335-5970 | SYRACUSE: 315-505-0565  
 | AUBURN: 315-515-3600 | ITHACA: 607-347-4455